

WEINTEK LABS., INC.

IP Camera

Demo Project

Contents

- 1. Overview and Operation 1
- 2. Setting up the Screen 1
- 3. Addresses 2

1. Overview and Operation

Overview

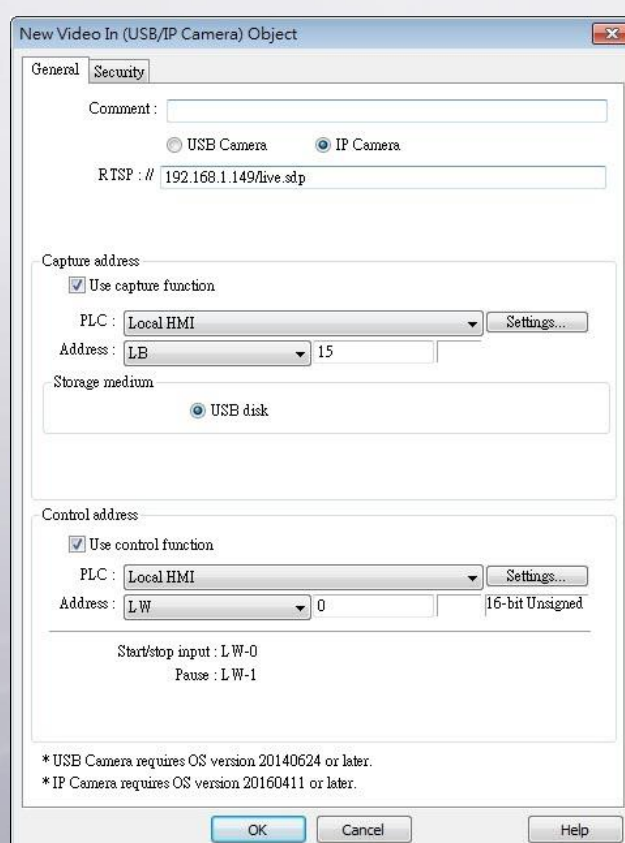
This demo project provides the basic setup for using IP camera function. Now it is possible to view the image of an IP camera from an HMI.

Operation

Toggle the switch to turn on IP camera and start viewing the video.

2. Setting up the Screen

Step 1. Create a Video In (USB/IP Camera) object. Select IP camera and enter the RTSP address for the IP camera. Use LB-15 for [Capture Address] and LW-0 for [Control Address].



Step 2. Create a Multi-State Switch object. Use LW-0 for [Read address], and cyclic jog+ with the number of states = 2.

Step 3. Create a Set Bit object. Use LB-15 for [Write address] with attribute [Set ON].

3. Addresses

The addresses of key objects used in this demonstration are listed below.

Object	Address	Description
Window 10		
Video In (USB/IP Camera)	LW-0, LB-15	Display IP camera image
Multi-State Switch	LW-0	Turn on/off IP camera
Set Bit	LB-15	Capture still image